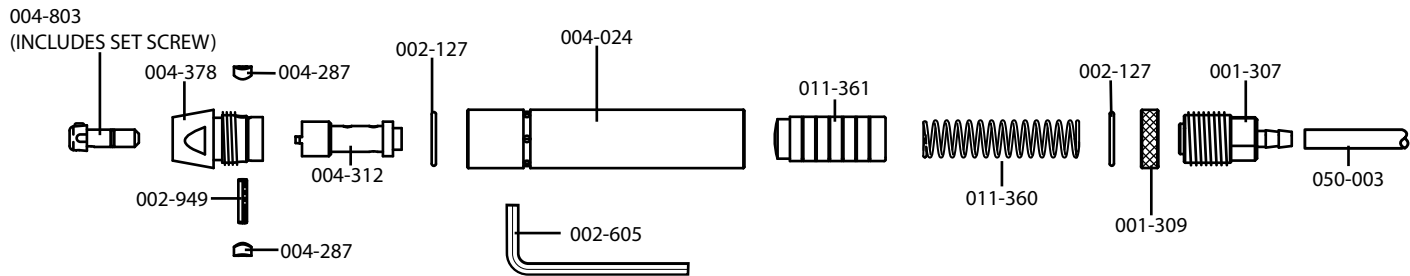


GRS QC LARGE HANDPIECE for the GraverMeister

PARTS LIST • #004-509-QC



PART NO. DESCRIPTION

001-307	Inlet
001-309	Nut
002-950	Set Screw (in Quick Change Chuck- not shown)
002-127	O-Ring - .625 X .75 X .062
002-605	Hex Wrench - 5/64"
002-949	Pin - 1/8" X 5/8"
004-024	Handpiece Body

PART NO. DESCRIPTION

004-287	Urethane Washer
004-312	QC Receiver
004-378	Handpiece Nose
004-434	Air Hose - 1/4" OD X .160" ID X 38"
004-803	Quick Change Chuck (complete with set screw)
011-360	Spring
011-361	Piston

GLENDO
CORPORATION

900 Overlander Rd • Emporia, KS 66801
 800-835-3519 • 620-343-1084 • Fax: 620-343-9640
www.grstools.com • glendo@glendo.com
 Last Updated: 03-24-2014