

• HORIZONTAL POSITION •

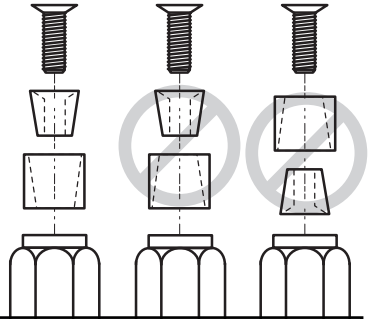
INSIDE RING HOLDER ASSEMBLY FOR VISES

INSTRUCTIONS:

Insert bolt through the mandrel cone and place into the tapered end of the mandrel you have selected (See Illustration). Position ring around the selected mandrel. Turn the bolt into the ring holder frame with the supplied wrench until the ring is snug.

DO NOT OVER TIGHTEN
Damage may occur to ring.

CORRECT WRONG

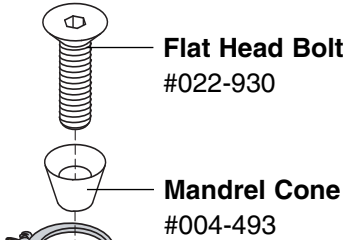


MANDREL	
Select the mandrel which is slightly smaller than the inside ring diameter.	
#004-170	.575"
#004-171	.625"
#004-172	.675"
#004-173	.725"
#004-174	.775"
#004-216	.825"
#004-217	.875"

#004-847
Complete Assembly

Long Flat Head Bolt:

#022-931
Use with double mandrels (see back)

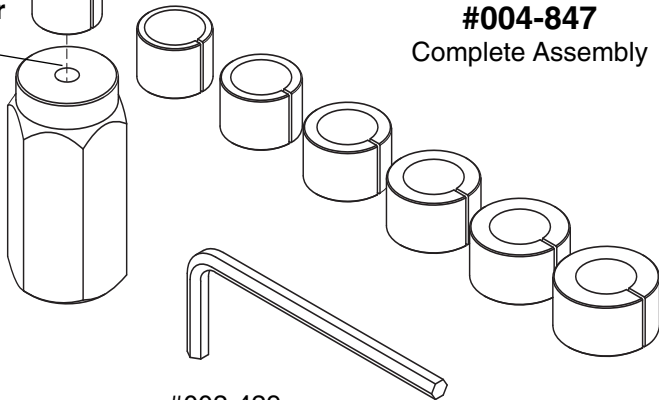


Flat Head Bolt
#022-930

Mandrel Cone
#004-493

Ring Holder Frame

#004-492
Secure ring holder in a jewelers vise while working on ring.



#002-429
5/32" HEX WRENCH

