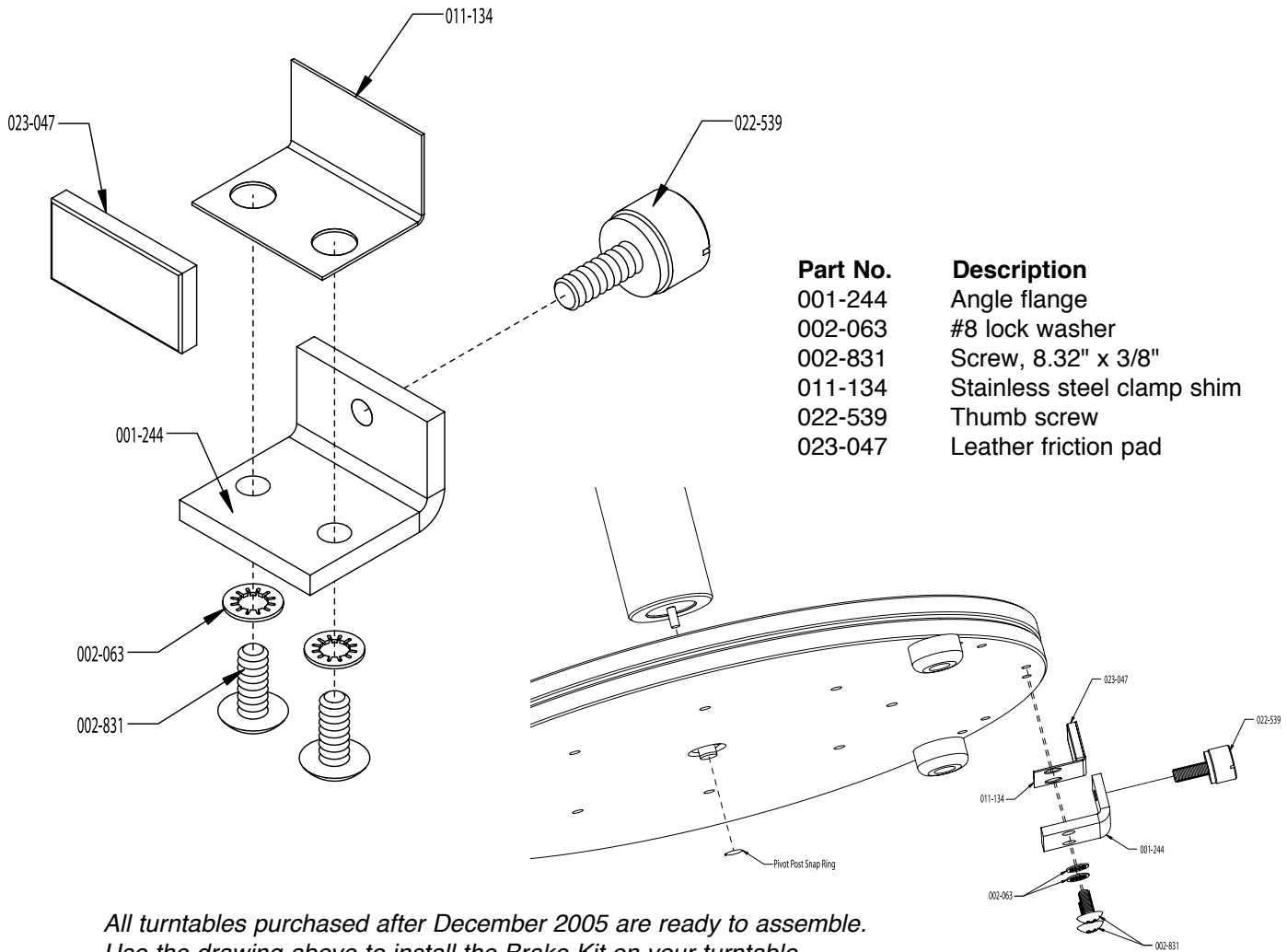


GRS Turntable Brake Kit INSTRUCTIONS & PARTS LIST

for GRS Turntable Base V2 • PART #003-343



Part No.	Description
001-244	Angle flange
002-063	#8 lock washer
002-831	Screw, 8.32" x 3/8"
011-134	Stainless steel clamp shim
022-539	Thumb screw
023-047	Leather friction pad

All turntables purchased after December 2005 are ready to assemble. Use the drawing above to install the Brake Kit on your turntable.

INSTALLATION INSTRUCTIONS

If your turntable was purchased prior to December 2005, you will have to drill and tap the 2 holes needed to mount this Brake Kit to your turntable. A: Cut out and use the template on page 2 to layout the 2 locations by carefully placing the template on the bottom of the turntable plate. B: Use a scribe to mark the center of each hole. Remove the paper and drill each hole with a .136" drill (#29 drill or 3.5mm) and cut the threads using a #8-32 tap. Assemble the Brake Kit according to the drawings.

HINT: The turntable can be disassembled to facilitate an easier job of drilling and tapping these 2 holes. Using a large towel spread out on a bench or table, lay the turntable face down and place a piece of tape across the small pivot post snap ring to prevent it from flying off when loosening the bottom plate from the top. With 2 screwdrivers positioned 180 degrees apart, gently leverage the 2 sides of the bottom plate up until the snap ring pops off the pivot post. Remove the bottom plate and drill according to the instructions above and re-assemble.

GLENDO
CORPORATION
900 Overlander Road
P.O. Box 1153
Emporia, KS 66801 USA
800-835-3519 • 620-343-1084
fax 620-343-9640
glendo@glendo.com
www.grstools.com

Template for turntables
manufactured before
January 2006.

